



Belco XT Trim

Thicknesses: 1", 5/4", 2"
Widths: 2" - 12"
Lengths: 8' - 20'
Textures: Comb 1 Face,
Comb 4 Sides, Resaw 1 Face

Ideal For

- ▀ Exterior trim & fascia
- ▀ Corner boards
- ▀ Garage door liners
- ▀ Bellyband
- ▀ Rake/frieze board
- ▀ Drip edge



Belco XT Corner Trim

2x4 XT Corner
Net: 1.438" x 3.313"
Lengths: 10', 20'
Texture: Comb

Ideal For

- ▀ 1 and 2 story applications
- ▀ Inside exterior corners
- ▀ Outside exterior corners



Belco XT Post

4x4 XT Post
Net: 3-1/2" x 3-1/2"
Lengths: 10', 12'
Texture: Comb

6x6 XT Post
Net: 5 x 5 1/2"
Lengths: 8', 10', 12'
Texture: Comb

8x8 XT Post
Net: 7" x 7-1/4"
Lengths: 10', 12'
Texture: Comb

Ideal For

- ▀ Porch posts
- ▀ Rails posts
- ▀ Gazebos
- ▀ Knee Braces
- ▀ Corbels

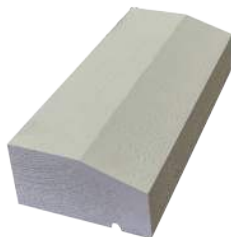


Belco XT Plowed Fascia

2X8 XT PLOWED FASCIA
Net: 1 7/16 x 7 1/8"
Lengths: 16' 18'
Texture: Comb, Smooth

2X6 XT PLOWED FASCIA
Net: 1 7/16 x 5 7/16"
Lengths: 16' 18'
Texture: Comb

Product Details: A single-step fascia product, primed on all 6 sides, preservative treated, and ready for installation.



Belco XT Sill Stock

Size: 2x3, 12'
Texture: Smooth
Ideal For: Window sill

Product Details: A 15-degree beveled sill to optimize water runoff without puddling. Bottom side includes relief cut to keep water from wicking into the trim below.

Belco Pattern: Pro Series, Signature Series, Artisan Series



Belco Pattern

Thicknesses: 1 - 2"
Widths: 6 - 8"
Lengths: 8 - 20'
Profiles: WP4 V4E, WP4 Nickel Gap, WP11 Shiplap, WC200 V2E, WC200 V4E
Finishes: Raw, Factory Primed, Factory Stained

Ideal For

- ▀ Soffit
- ▀ Porches
- ▀ Interior and Exterior Wall Paneling
- ▀ Interior and Exterior Ceilings