



Multifamily Trim Products

The First Choice for Lasting Value

Belco XT Trim, Post and Beam products deliver one of the highest values per foot dollar when compared to engineered wood, composites, fiber cement, PVC or other wood trim competitors. When running true cost/benefit analyses, the clear winner is always XT. Here's why...



Feature	Direct Benefit
Wood Preservative -WOLMAN AG	Product rot/decay liability is on Belco Forest Products for 20 years. Transferable to subsequent owners.
Weight Factors – 4x lighter than cementitious and 3x lighter than engineered wood	More sticks mean more lineal foot coverage and faster installation for the same load.
Value Engineering – Structural properties and optimal sizing	Unlike man-made trim, XT needs no additional subframe and offers lengths and thicknesses that are unavailable in man-made products.
Ease of Use – Crew favorite	Solid wood is the easiest building material to cut, drill, route, glue, bolt – no special blades, PPE, or OSHA Safety concerns.
Natural, Planet-Friendly Wood – LCA (Life Cycle Analysis)	Growing forests remove greenhouse gas from the atmosphere thereby helping cool the planet. North American forests are sustainably managed.
Lowest Cull Rate – Strict internal appearance grade	XT can reduce your waste factor by 5-15% over more loosely graded SPF and brittle cement products.

PRODUCT SPECS

XT TRIM

Widths: 2" to 12"
 Lengths: 8' to 20'
 Thickness: 1", 5/4, 2"
 Textures: Combed Face
 (smooth and roughsawn on request)

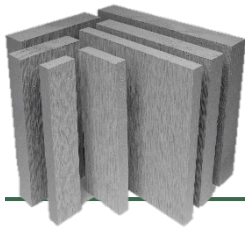
XT POST

Sizes: 4x4, 6x6, 8x8
 Texture: Comb 4 sides
 Lengths: 8' 10' 12'

Type III, IV, V Construction
 Student Housing
 Assisted Living
 Active Senior
 Townhomes
 Garden Style
 Low-Rise Commercial
 Hospitality

Distributed by

Local Contact Kevin Hayes
khayes@belcofp.com
 Cell: 253-678-2617



Belco XT Post and Belco XT Trim Short Form Specification

The following is a guide for preparing specifications for Belco XT Posts used for axially loaded members such as columns or truss chords and Belco XT Trim used for fascia, barge, bellyband, window and door trim, rake and frieze boards, windowsills, garage trimmers and balusters.

A. General

1. Belco XT Posts and XT Trim shall be furnished as shown on the plans and in accordance with the following specifications and nomenclature.
2. Call out Belco XT (Post/Beam/Trim), specify size (2x8, 6x6, 5/4x4, etc. length 8', 10', 12' etc.) textured (C1F - combed 1 face, S4S - smooth 4 sides, C4S - combed 4 sides) NOTE: Posts are typical C4S. XT designates a preserved and primed product.
3. The general contractor shall furnish connection steel and hardware for attaching Belco XT Posts and XT Trim to their supports including anchorage embedded in masonry or concrete or setting plates.
4. Typical related sections for Belco XT Posts and XT Trim:
 - a. Section 06 20 13 - Exterior Finish Carpentry.
 - b. Section 06 40 13 - Exterior Architectural Woodwork.
 - c. Section 06 43 16 - Wood Railings.
 - d. Section 07 46 33 - Plastic Siding.
 - e. Section 09 90 00 - Painting and Coating.

B. Manufacture

1. *Materials, Manufacture, and Quality Assurance* – Belco XT Posts of softwood species shall be in conformance with ANSI A190.1, *American National Standard for Structural Glued Laminated Timber*.
2. *End-Use Application* – Belco XT Posts shall be manufactured for the following structural uses as applicable: compression member – C
tension member – T.
Belco XT Trim (2" and 5/4" nominal) shall be manufactured for the following structural uses as applicable: fascia, bellyband, barge boards.

3. *Design Values* – Belco XT Post shall provide design values for normal load duration and dry-use condition.
4. *Laminating Adhesives* – Adhesives used in the manufacture of Belco XT Posts shall meet requirements for (wet-use) (dry-use) service conditions.
5. *Preservative Treatment* – Belco XT Post and XT Trim shall be surface treated during manufacture with WOLMAN® AG wood preservative for above ground applications.
6. *Protective Finishes* – For Belco XT Posts and XT Trim, primer or paint shall be applied to all cut ends. Surfaces shall be top-coated within 60 days of installation with paint or solid-body stains.
7. *Trademarks* – Belco XT Post and XT Trim shall be marked with the XT stamp indicating conformance with the manufacturing, quality assurance and marking provisions of Belco Forest Products and ANSI A190.1 (XT Posts).
8. *Certificate of Conformance (Belco XT Posts)* – A certificate of conformance may be provided by the manufacturer to indicate conformance with ANSI A190.1 if requested.
9. *Warranty* - Manufacturer's Standard Warranty for Belco XT Post and XT Trim: Manufacturer warrants to the purchaser, the first Owner of the structure to which Belco XT Posts and XT Trim (Product) are applied and the first subsequent owner of said structure, that the Product, under normal conditions of use and exposure, when stored, installed, painted and maintained in accordance with the Installation and Handling instructions shall be free from delamination and manufacturing defects that cause excessive swelling, blistering, peeling, cracking or chalking and decay fungi which would render such products structurally unfit for its intended application for a period of 20 years. (See full warranty for details.)



Treated Wood Trim System Specification
Revised 02/22

SECTION 06 46 00

WOOD TRIM

PART 1 GENERAL

SECTION INCLUDES

- 1.1 A. Wood trim and fascia (Wolman AG treated) including the following types (Belco XT Treated Trim, Belco XT Post):
 - 1. Exterior wood trim and fascia boards.
 - 2. Bellyband trim.
 - 3. Window trim.
 - 4. Door trim.
 - 5. Garage door liner.
 - 6. Column and post wrap.
 - 7. Rake/frieze board.
 - 8. Porch and deck balusters.
 - 9. Window sills.
 - 10. Porch and deck posts.
- B. Wood trim and fascia including the following types (Belco XT Trim and Fascia):
 - 1. Exterior wood trim and fascia boards.
 - 2. Bellyband trim.
 - 3. Window trim.
 - 4. Door trim.
 - 5. Garage door liner.
 - 6. Column and post wrap.
 - 7. Rake/frieze board.
 - 8. Porch and deck balusters.
 - 9. Window sills.

1.2 RELATED SECTIONS

- A. Section 06 20 13 - Exterior Finish Carpentry.
- B. Section 06 40 13 - Exterior Architectural Woodwork.
- C. Section 06 43 16 - Wood Railings.
- D. Section 07 46 33 - Plastic Siding.
- E. Section 09 90 00 - Painting and Coating.

1.3 REFERENCES

- A. ASTM International (ASTM)
 - 1. ASTM D 3359 - Standard Test Methods for Measuring Adhesion by Tape Test.
 - 2. ASTM D 4587 - Standard Practice for Light/Water Exposure of Paint.
 - 3. ASTM D 5007 - Standard Test Method for Wet-to-Dry Hiding Change.

1.4 SUBMITTALS

- A. Submit under provisions of Section 01 30 00 - Administrative Requirements.
- B. Product Data: Manufacturer's data sheets on each product to be used, including:
 - 1. Preparation instructions and recommendations.
 - 2. Storage and handling requirements and recommendations.
 - 3. Installation methods.
- C. Verification Samples: For each finish product specified, two samples, minimum size 6 inches (150 mm) long representing actual product, color, and surface profile.

1.5 QUALITY ASSURANCE

- A. Installer Qualifications: Minimum 2 years experience installing similar products
- B. Mock-Up: Provide a mock-up for evaluation of surface preparation techniques and application workmanship.
 - 1. Finish areas designated by Architect.
 - 2. Do not proceed with remaining work until workmanship is approved by Architect.
 - 3. Refinish mock-up area as required to produce acceptable work.

1.6 DELIVERY, STORAGE, AND HANDLING

- A. Product shall be stored flat, in a clean and dry environment until the time of installation; avoid any contact with the ground, concrete, or standing water.
- B. Handle materials to avoid damage.

1.7 PROJECT CONDITIONS

- A. Maintain environmental conditions (temperature, humidity, and ventilation) within limits recommended by manufacturer for optimum results. Do not install products under environmental conditions outside manufacturer's recommended limits.

1.8 PRE-APPLICATION MEETINGS

- A. Convene minimum two weeks prior to starting work of this section.

1.9 SEQUENCING

- A. Ensure that products of this section are supplied to affected trades in time to prevent interruption of construction progress.

1.10 WARRANTY

- A. Manufacturer's Standard Warranty for Belco XT Trim and Belco XT Post: Manufacturer warrants to the purchaser, the first Owner of the structure to which Belco XT Trim & Fascia & XT Posts ("Product") are applied and the first subsequent owner of said structure, that the Product, under normal conditions of use and exposure, when stored, installed, painted and maintained in accordance with the Installation and,

Warranty cont.:

1. Will be free against damage resulting from decay fungi which would render such Product structurally unfit for its intended application for a period of twenty years from the date of purchase from the manufacturer ("Warranty Period").
2. Will be free from manufacturing defects causing rotting, excessive swelling, blistering, peeling, cracking or chalking for a period of twenty years from the date of purchase from the manufacturer ("Warranty Period").

PART 2 PRODUCTS

2.1 MANUFACTURERS

- A. Acceptable Manufacturer: Belco Forest Products , which is located at: 1890 E. Johns Prairie Rd.; Shelton, WA 98584; Toll Free Tel: 800-426-7214; Tel: 360-426-8900; Fax: 360-432-3634; Email: [request info \(ales@belcofp.com\)](mailto:request info (ales@belcofp.com)); Web: www.belcofp.com
- B. Substitutions: Not permitted.
- C. Requests for substitutions will be considered in accordance with provisions of Section 01 60 00 - Product Requirements.

2.2 TRIM AND FASCIA

- A. Product: Belco XT Trim and Belco XT Post as manufactured by Belco Forest Products.
 1. Species: Inland Species of SPF (Spruce/Pine/Fir).
 2. Milled Texture:
 - a. Comb Face.
 - b. Comb 4 Sides.
 - c. Resawn Face.
 - d. Smooth.
 - e. BrushTex.
 3. Profile Dimensions: As scheduled on the Drawings from manufacturer's standard width and thickness.
 - a. Standard/dimensional lumber.
 - b. Notch.
 - c. Groove.
 - d. Rabbet.
 - e. Sill stock (S4S)
 - f. As per sample.
 - g. As indicated on Drawings.
 4. Finish: Primer only.
 - a. Color: light gray.
 - b. Color: As per sample.
 - c. Color: As indicated on drawings.
 5. Finish: Factory Finish Top Coating (when applicable)
 - a. Procedure: 1 coat, coated all 6 sides.
 - b. Procedure: 2 coats, coated all 6 sides.
 - c. Color: _____.
 - d. Color: As per sample.
 - e. Color: As indicated on Drawings.

Belco Forest Products
1890 E. Johns Prairie Rd.
Shelton, WA 98584
360-426-8900

PART 3 EXECUTION

3.1 EXAMINATION

- A. Do not begin installation until substrates have been properly prepared.
- B. If substrate preparation is the responsibility of another installer, notify Architect of unsatisfactory preparation before proceeding.

3.2 PREPARATION

- A. Clean surfaces thoroughly prior to installation.
- B. Prepare surfaces using the methods recommended by the manufacturer for achieving the best result for the substrate under the project conditions.

3.3 INSTALLATION

- A. Install in accordance with manufacturer's instructions. Finish materials on all sides and ends. Apply touch up coating on new cuts.

3.4 PROTECTION

- A. Protect installed products until completion of project.
- B. Touch-up, repair or replace damaged products before Substantial Completion.

END OF SECTION



Naturally Beautiful. Built to Last.

Today, solid wood remains one of the most attractive and cost effective exterior millwork choices for construction projects. And Belco's preservative treated XT Trim is leading the charge. With a 20-year limited warranty, XT Trim products not only provide a beautiful touch to the exterior of the home but also long-lasting peace of mind.

Thicknesses: 1", 5/4", 2"

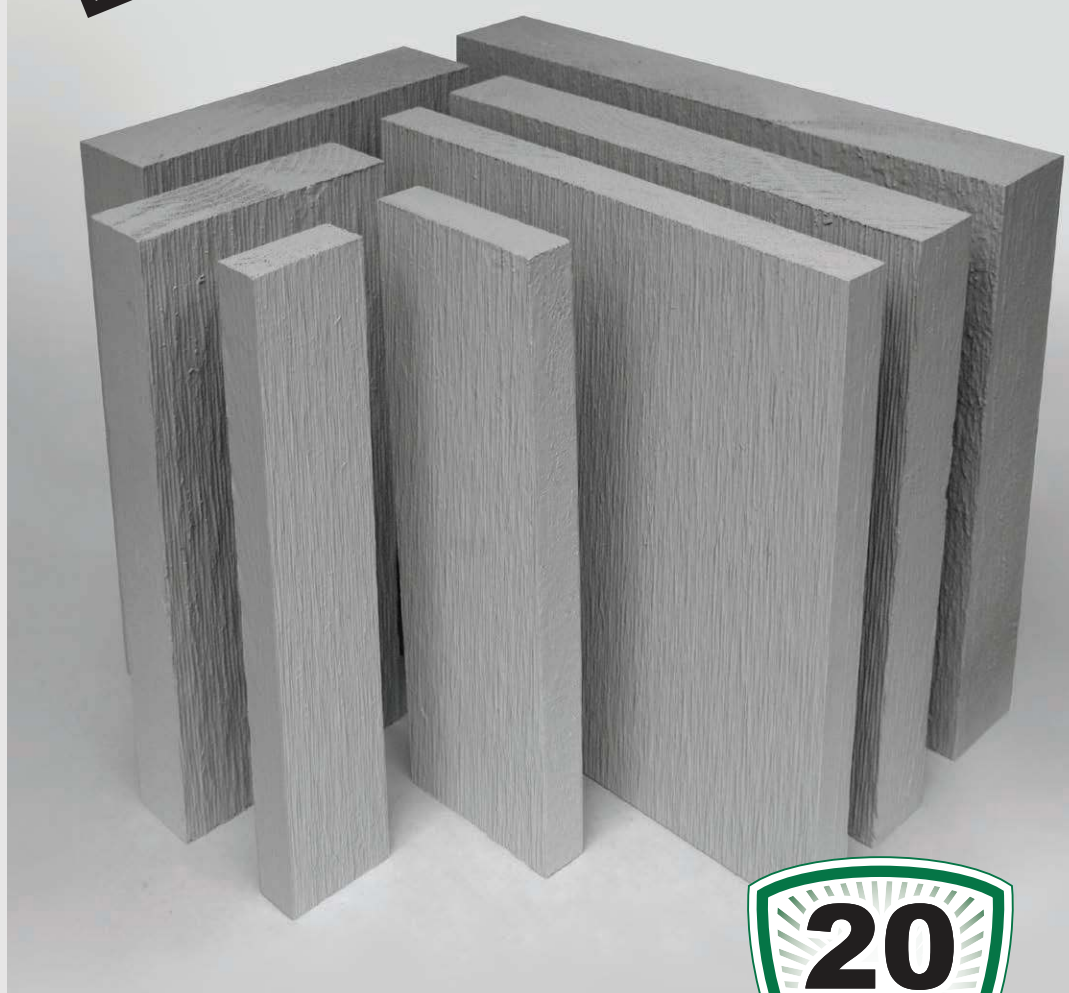
Widths: 2" - 12"

Lengths: 8' - 20'

Textures: Comb face, resawn face, smooth face, and BrushTex

Ideal for:

- Exterior trim & fascia
- Corner boards
- Garage door liners
- Bellyband
- Rake/frieze board
- Drip edge



PRESERVATIVE TREATMENT - WOLMAN® AG

- A water-based, nonmetallic, wood preservative surface treatment
- Wolman® AG is an EPA approved treatment

FUNCTIONAL

- Available in widths and lengths to meet all your exterior trim needs
- Lightweight for easier installation
- 20-year warranty against rot

COST EFFECTIVE

- Pre-primed, saves time and money during installation
- Metal free, non-corrosive treatment means no special tools or fasteners
- Less costly than cedar, redwood, fiber cement or composite alternatives
- Highly stable, tight-knot, appearance grade SPF substrate





One and Done Solution

Today, wood remains one of the most attractive and cost effective choices for construction projects. Belco's preservative treated XT Post is leading the charge. With a 20-year limited warranty, XT Post products not only provide you with a beautiful, single step solution for post installation but also longlasting peace of mind.

4x4 XT Post

Net: 3-1/2" x 3-1/2"

Lengths:* 10', 12'

Texture: Combed

6x6 XT Post

Net: 5-1/2" x 5"

Lengths:* 8', 10', 12'

Texture: Combed

8x8 XT Post

Net: 7-1/4" x 7"

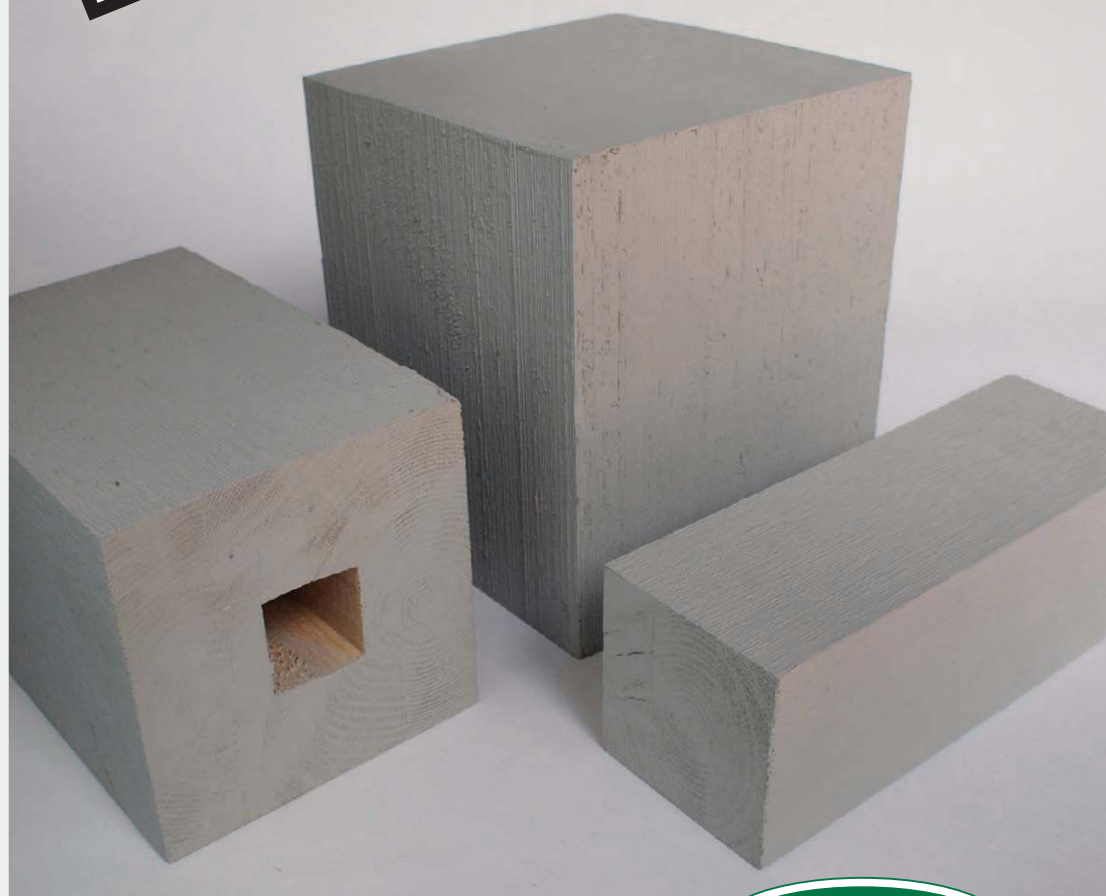
Lengths:* 10', 12'

Texture: Combed

** Custom lengths available on request*

Ideal for:

- Porch posts
- Rail posts
- Gazebos
- Knee Braces
- Corbels



PRESERVATIVE TREATMENT - WOLMAN® AG

- A water-based, nonmetallic, wood preservative surface treatment
- Wolman® AG is an EPA approved treatment

FUNCTIONAL

- Structural engineered columns provide greater stability, less warp, and reduced potential for checking than solid timber or hollow posts
- 6x6 and 8x8 products come standard with a conduit chase for lighting installation

COST EFFECTIVE

- Pre-primed, trimmed out post saves time and money during installation – no more column wrapping
- Metal free, non-corrosive treatment means no special tools or fasteners
- Less costly than fiberglass or aluminum alternatives





EXTERIOR POST PRODUCTS

Allowable Axial Load Capacities

Column Length (ft)	4X4			6X6			8X8		
	C _D =1.0	C _D =1.15	C _D =1.25	C _D =1.0	C _D =1.15	C _D =1.25	C _D =1.0	C _D =1.15	C _D =1.25
8	2452	2820	3065	9774	11240	12217	19239	22125	24049
10	1695	1950	2119	8405	9666	10507	18333	21083	22916
12	1212	1393	1515	6678	7679	8347	16790	19309	20988
14	-	-	-	5195	5975	6494	14580	16768	18226
16	-	-	-	4091	4704	5113	12192	14020	15240
18	-	-	-	3283	3776	4104	10089	11603	12611
20	-	-	-	2686	3089	3357	8390	9649	10488

¹ All allowable load capacities are determined for compression only in accordance with the Design Values as published in the APA Product Report PR-L321. Allowable load capacities assume dry use, untreated applications in sustained exposure of temperatures < 100°F (38°C).

² For wet service conditions the allowable axial capacity should be multiplied by CM = 0.73.

³ For service conditions above 100°F (38°C), the allowable axial capacity should be multiplied by the appropriate Ct factor in Table 2.3.3 of the National Design Specification for Wood Construction.

⁴ Table assumes that effective column length is equal to actual column length and end conditions are rotation free, translation fixed.

INSTALLING

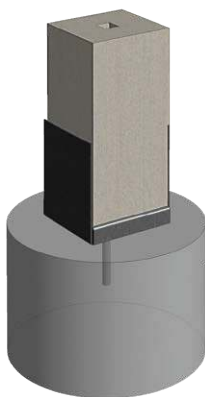
Uplift Application

When XT Post has been designed for use in an uplift application, post bases and caps are REQUIRED. Belco recommends Simpson Strong Tie products but products of equal properties are accepted. Refer to base and cap manufacturer's instructions for capacities and connector attachment.

Vertical Load Only Application

When XT Post has been designed for use in a vertical load only application, a nailed connection can be implemented.

Raised Base Connection



Column Base Connection



Column Cap Connection



Value Engineering with Treated Trim

Many multi-family and low-rise commercial projects require on-the-fly product changes because of unforeseen circumstances such as availability driven by manufacturing, or unforeseen cost over-runs causing budget constraints.

Advantage Treated Wood Trim

Project deadlines are extremely important to a developer's and building owner's bottom line. In most cases the developer is hit with steep fines when missing project deadlines. Furthermore, every day the owner misses their opening date, is a day of lost revenue. An analysis of the functional requirements of fascia and trim revealed a decided edge for the solid wood treated trim over more expensive products such as fiber cement in this case (see table). Cost of materials and labor is also higher with respect to fiber cement due to the need for a structural substrate. Another disadvantage to fiber cement is the need for special tools, and breathing devices to prevent inhalation of silica dusts. However, new formulations* in wood preservative treatments coupled with a focus on wood-fiber quality, stability and longevity, gives ArmorCoat XT products a distinct advantage. ArmorCoat XT will always meet and exceed the functional examination.

Value engineering with treated wood trim can solve many specific requirements for design, durability and budget in both residential and low-rise commercial applications.



Common multifamily applications include barge, exterior jambs, fascia, battens, posts, beams and frieze/rake.

XT TRIM	Function	Fiber Cement
Yes	Structural	Decorative Only
Wood	Aesthetics	Monolithic
High	Workability	Low/Brittle
\$	Price Point	\$\$\$
Standard Tools	Installation	Special Tooling/Air Handling
20+ Years	Service Life	20+ Years
Non-Prorated 20 years	Warranty Period	15 years

*Belco XT is treated with nonmetallic **Wolman® AG** to guard against rot, mold, mildew and insects. Belco XT is coated with a superior grade primer.

ABOUT BELCO FOREST PRODUCTS — In business since 1978, the company operates three manufacturing plants on 16 acres in Shelton, Washington. Belco manufactures and distributes XT Trim and Fascia, XT Posts and Beams and WOODGRAIN Wall and Ceiling Boards for residential and commercial applications. All Belco products are available through leading distributors and dealers nationwide.

Belco XT Treated Trim Rescues Mid-Rise Apt.

Project: District at Memorial

Project Type: Restoration

Location: Houston, Texas

General Contractor: Cotton Team Construction

Description: This complex underwent exterior renovation after previous trim system failed after only 4 years.

Applications: Windows, corners, fascia, balcony wrap

Builder Comments: *"...our firm contracted to restore the District at Memorial apartment complex in Houston. The problem was rotted wood trim, which led to major water intrusion and mold. For the restoration, I specified Belco XT treated trim, because I knew that we could get a 20-year warranty. The product has performed very well for us in the past. The engineering firm fought us to use a low-grade white wood to reduce costs. The minor cost differential was more than offset by the value add for Belco XT."*

- Bill Jatzlau,
Project Coordinator
- Reece Johnson,
Project Manager

