



# ArmorCoat XT

## TREATED TRIM PRODUCTS

### XT POST

Comb-faced, primed and ready for paint, XT Posts signal the end of the pressure-treated post era.

#### 4X4 XT POST

**Net:** 3" x 3-1/2"

**Lengths:**\* 8', 10', 12'

**Texture:** C4S

#### 6X6 XT POST

**Net:** 5" x 5-1/2"

**Lengths:**\* 8', 10', 12'

**Texture:** C4S

#### 8X8 XT POST

**Net:** 7" x 7-1/4"

**Lengths:**\* 8', 10', 12'

**Texture:** C4S

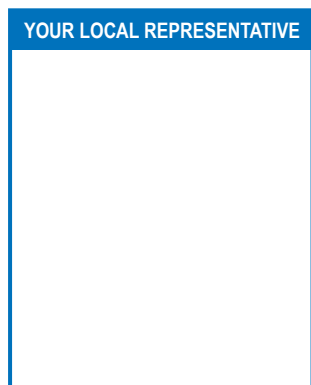
\* Custom length available on request



# XT POST

### Ideal for:

- Porch posts
- Rail posts
- Gazebos
- Knee Braces
- Corbels



#### PRESERVATIVE TREATED

- Featuring WOLMAN® AG, a water-based, nonmetallic, wood preservative treatment.
- Qualified under WDMA Water-Repellent Preservative Treatment Certification Program

#### FUNCTIONAL

- Structural engineered columns provide greater stability and less warp and reduced potential for checking than solid timber or hollow posts.
- 6x6 and 8x8 products come standard with a conduit chase for lighting installation.

#### COST EFFECTIVE

- Pre-primed, trimmed out post saves time and money during installation –no more column wrapping.
- Metal free, non-corrosive treatment means no special tools or fasteners.
- Less costly than fiberglass or aluminum alternatives.

#### APPEARANCE

- Natural beauty of SPF wood
- Combed finish texture





# ArmorCoat XT

## TREATED TRIM PRODUCTS

# XT POST

### Allowable Axial Load Capacities

Column Length (ft)	4x4			6x6			8x8		
	$C_D=1.0$	$C_D=1.15$	$C_D=1.25$	$C_D=1.0$	$C_D=1.15$	$C_D=1.25$	$C_D=1.0$	$C_D=1.15$	$C_D=1.25$
8	2452	2820	3065	9774	11240	12217	19239	22125	24049
10	1695	1950	2119	8405	9666	10507	18333	21083	22916
12	1212	1393	1515	6678	7679	8347	16790	19309	20988
14	-	-	-	5195	5975	6494	14580	16768	18226
16	-	-	-	4091	4704	5113	12192	14020	15240
18	-	-	-	3283	3776	4104	10089	11603	12611
20	-	-	-	2686	3089	3357	8390	9649	10488

<sup>1</sup> All allowable load capacities are determined for compression only in accordance with the Design Values as published in the APA Product Report PR-L321. Allowable load capacities assume dry use, untreated applications in sustained exposure of temperatures < 100°F (38°C).

<sup>2</sup> For wet service conditions the allowable axial capacity should be multiplied by  $C_M = 0.73$ .

<sup>3</sup> For service conditions above 100°F (38°C), the allowable axial capacity should be multiplied by the appropriate  $C_t$  factor in Table 2.3.3 of the National Design Specification for Wood Construction.

<sup>4</sup> Table assumes that effective column length is equal to actual column length and end conditions are rotation free, translation fixed.

## INSTALLING

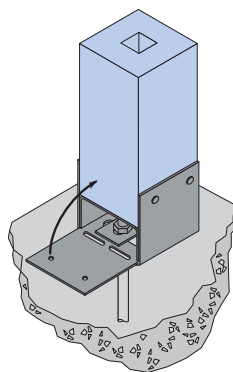
### Uplift Application

When XT POST has been designed for use in an uplift application, post bases and caps are REQUIRED. Belco recommends products of equal properties. OZCO, Simpson and USP manufacture a variety of acceptable bases and caps in galvanized and decorative iron. Refer to the manufacturer for installation.

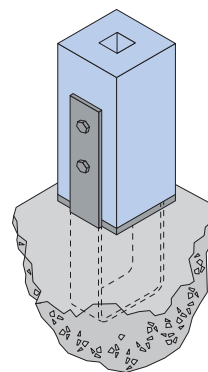
### Vertical Load Only Application

When XT Post has been designed for use in a vertical load only application, a nailed connection can be implemented.

Raised Base Connection



Column Base Connection



Column Cap Connection

